

NodeB Development



More than 3000 man years of development experience in 2G up to 4G (base station & controllers) positions Nash Technologies as a ideal partner in NodeB development.

Our experience covers all major R&D areas, i.e.

- 3GPP standardization work including functional simulations and optimizations
- NodeB System Design and Architecture
- NodeB software design and implementation (Call Processing, OA&M, HSPA schedulers and integrated debug and test tools)
- NodeB integration & verification and delivery of a fully certified network element

Throughout the complete development cycle, our team uses state-of-the-art development tools and processes: UML, Case Tools, Software Configuration Management, Version Control Tools, Defect Tracking Tools and Proofing Tools.

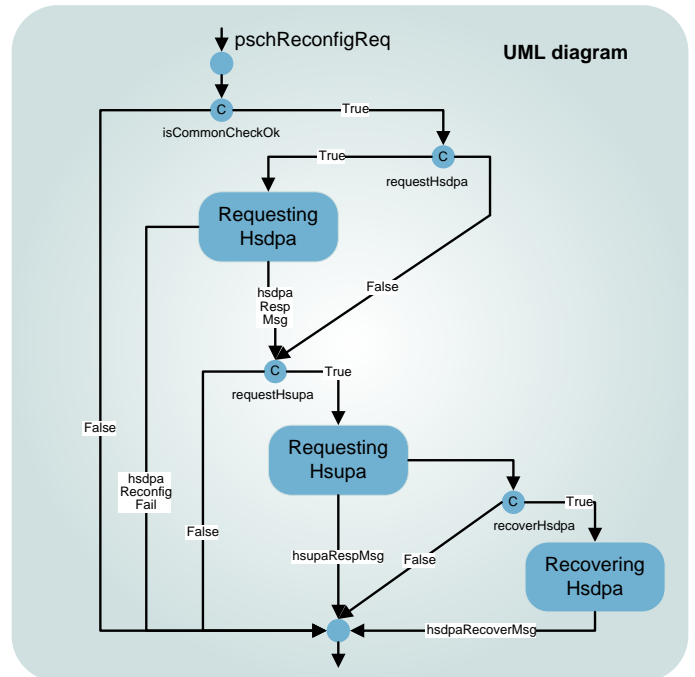
Depending on requirements, time-critical embedded software is implemented in C++/C or Assembler.

The target platforms comprise native processors as well as commercial real-time operating systems.

FPGAs are programmed using MATLAB simulation and VHDL implementation tools.

Our NodeB R&D team is ideally positioned to support you with NodeB development

Nash Technologies has extensive, hands-on knowledge and experience in all types of wireless, embedded software design and testing, and has been responsible for successfully maintaining thousands of deployed NodeBs.



About Nash Technologies

Nash Technologies, based in Nuremberg Germany, develops, tests and supports software for the fast-growing global wireless technology sector. The centre of excellence, with in-depth experience acquired in the world-renowned Bell Labs, joined the Harvey Nash Group as an independent spin-off of Alcatel-Lucent's R&D operation. Nash Technologies' wide-ranging expertise covers all phases of the product lifecycle, and its wireless testing facilities rank among the largest in the world.

Nash Technologies' services comprise wireless communication system development and support, telecommunication testing services as well as embedded software development and testing. We deliver a unique combination of blended onshore and offshore research and development service – in Europe and Vietnam – and are thus ideally positioned to provide our international clients with onshore quality service at a very competitive price.